

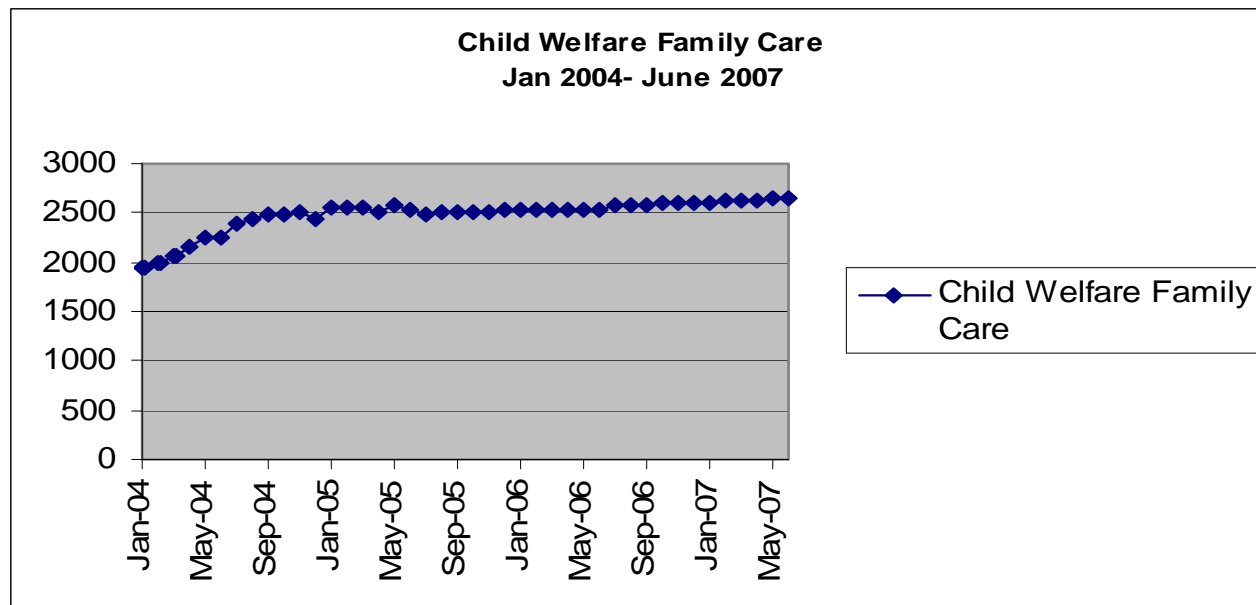
Caseloads

Child Welfare

Child Welfare data represents all 17 Nevada Counties, **including** Washoe and Clark. Child Welfare caseloads are projected using the State Demographer's projections for the respective year. CLEO data analysis thus far shows that there is a close relationship between Child Welfare caseloads and population growth. Therefore, for CY04 the growth rate is 3.3%, for CY05 the growth rate is 3.2%, for CY06 the growth rate is 3.0% and for CY07 the growth rate is 2.9% with a four year average of 3.1% growth rate over said time period.

Lower Levels of Care

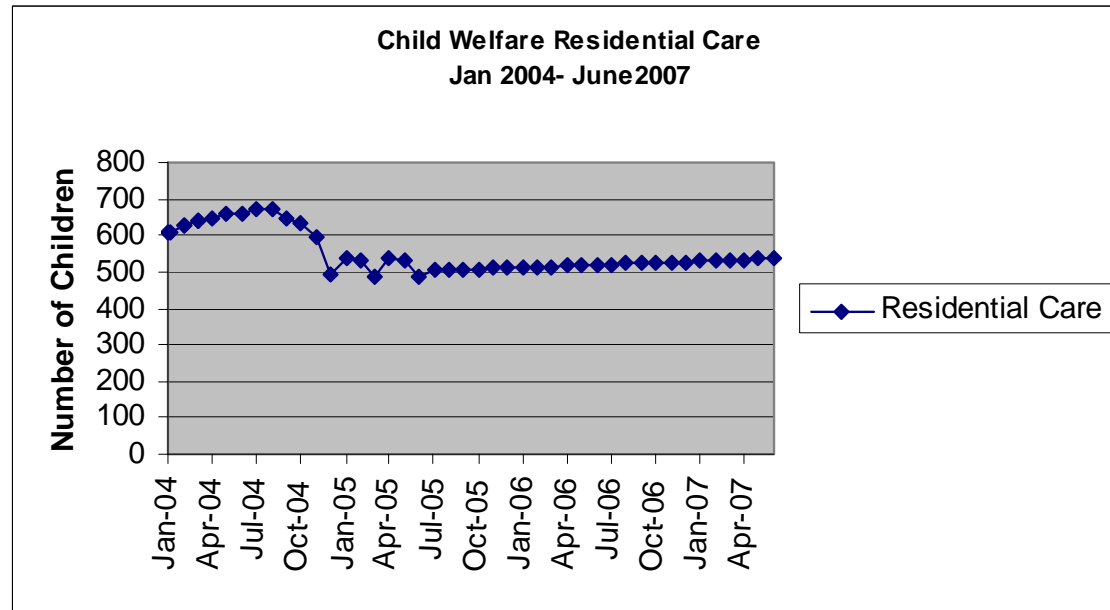
Child Welfare Lower Levels of Care include: Foster Care, ICPC IV-E and non IV-E, Independent Living, Medically Fragile, Paid and Unpaid Relative, Special Rate and Shelter Care.



The average number of children in Lower Levels of Care for the period January 2004- June 2007 is 2449.

Higher Levels of Care

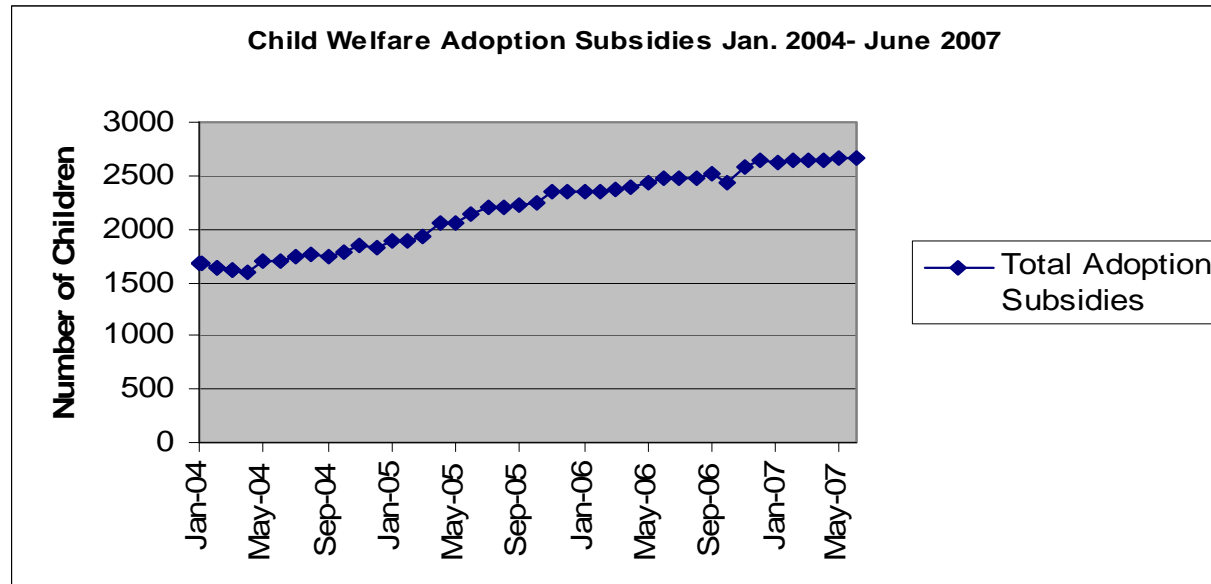
Child Welfare Higher Levels of Care include: Residential Treatment, Hospital/ Medical Placements, Mental Health Placements (includes Psychiatric Hospitals and Residential Treatment Centers) and Out of State Placements.



The average number of children in Higher Levels of Care for the period January 2004- June 2007 is 556.

Adoption Subsidies

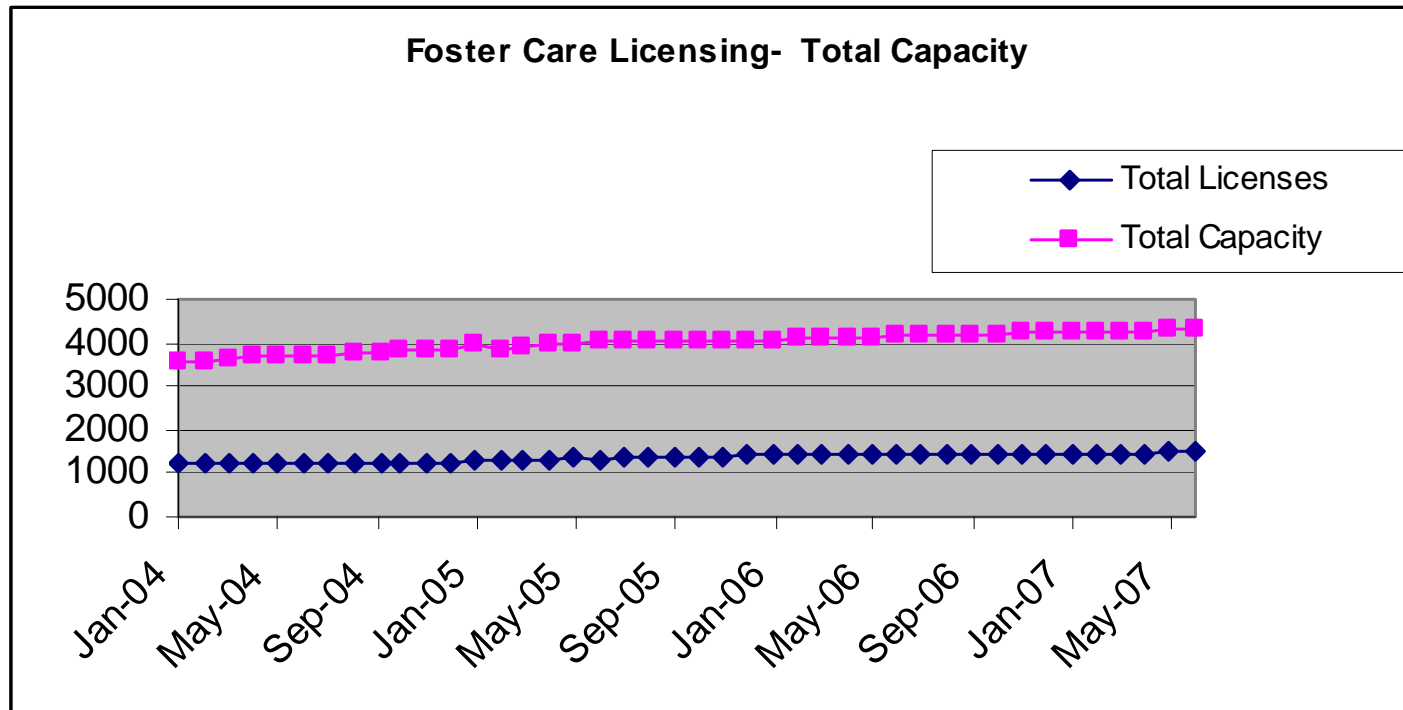
Child Welfare Adoption Subsidies include: Medical Only Subsidies, Financial Only Subsidies, Medical and Financial Subsidies and Agreement Only Subsidies.



The average number of children receiving an Adoption Subsidy for the period January 2004- June 2007 is 2142.

Foster Care Licensing

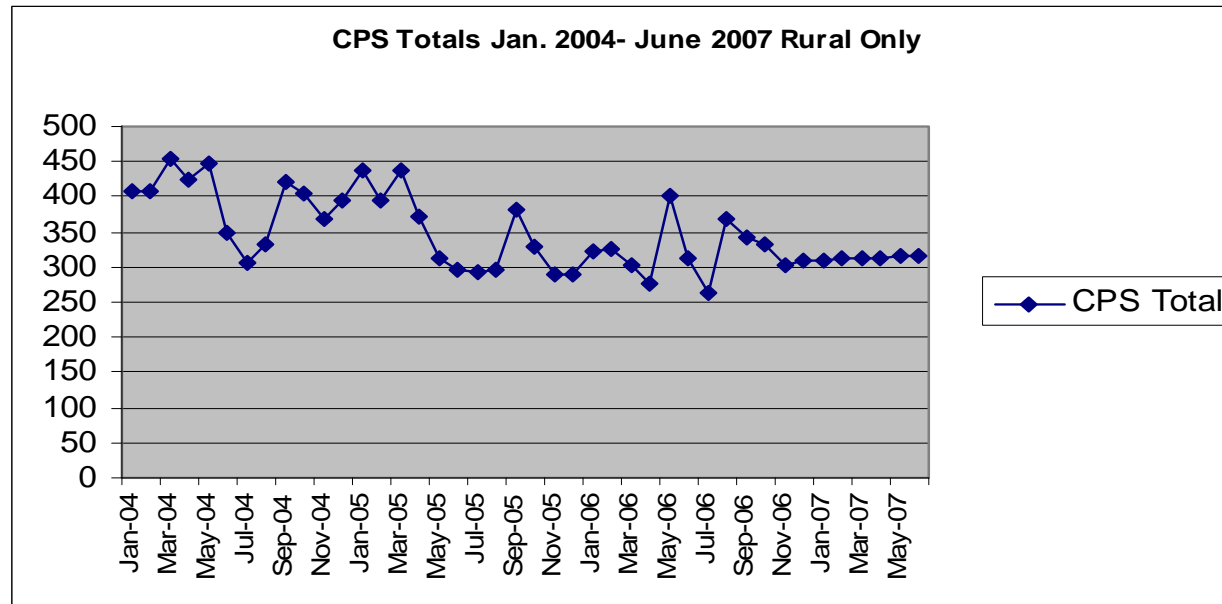
Foster Care Licensing and Capacity numbers represent family foster homes of both relatives and non-relatives as well as group foster homes. These numbers are projected using the State Demographer's numbers for population growth.



For any given month in this time frame (January 2004- June 2007) the average number of licenses Foster Care Homes in Nevada is 1,370 with an average capacity of 4,014.

Rural Child Protective Services

CPS data represents the 15 Nevada counties **excluding** Washoe and Clark. CPS Caseload is projected using State Demographer's projections for the respective year. CLEO data analysis thus far shows that there is a close relationship between Child Welfare caseloads and population growth. Therefore, for CY04 the growth rate is 3.3%, for CY05 the growth rate is 3.2%, for CY06 the growth rate is 3.0% and for CY07 the growth rate is 2.9% with a four year average of 3.1% growth rate over said time period.



The average number of CPS cases for the period January 2004- June 2007 is 348.

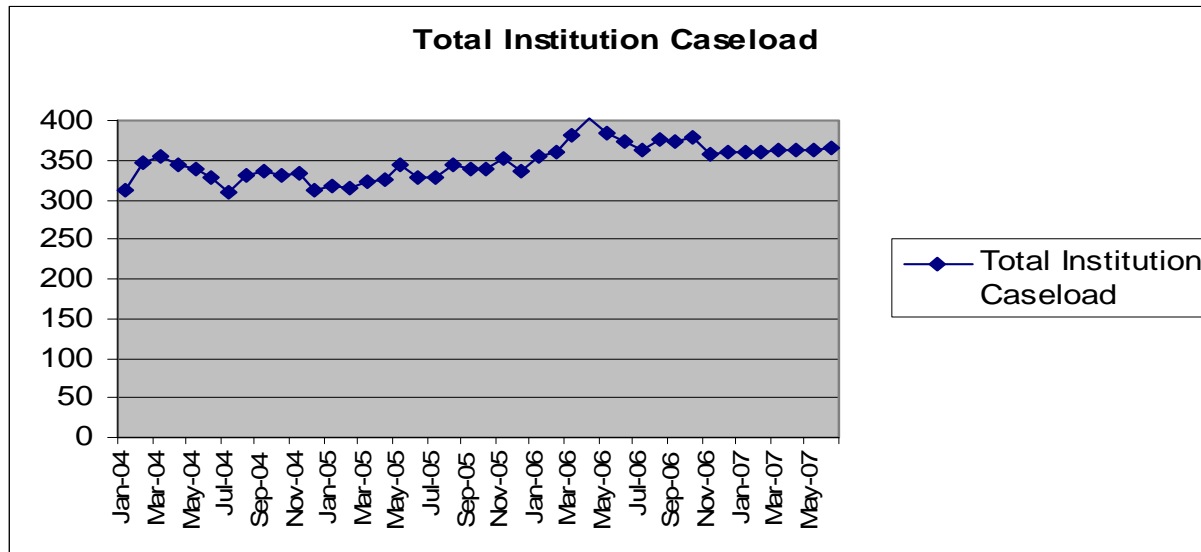
Note: There is seasonality to CPS reports, with lower numbers in months June-August and the highest numbers being reported in October-May. October- May tend to be higher reporting months due to the public school calendar. While school is in session more mandatory reporters in the form of teachers and other school personnel are in regular contact with children.

Juvenile Justice Services

Projections for Juvenile Justice Services were made with the same methodology as Child Welfare.

Total Institution Cases

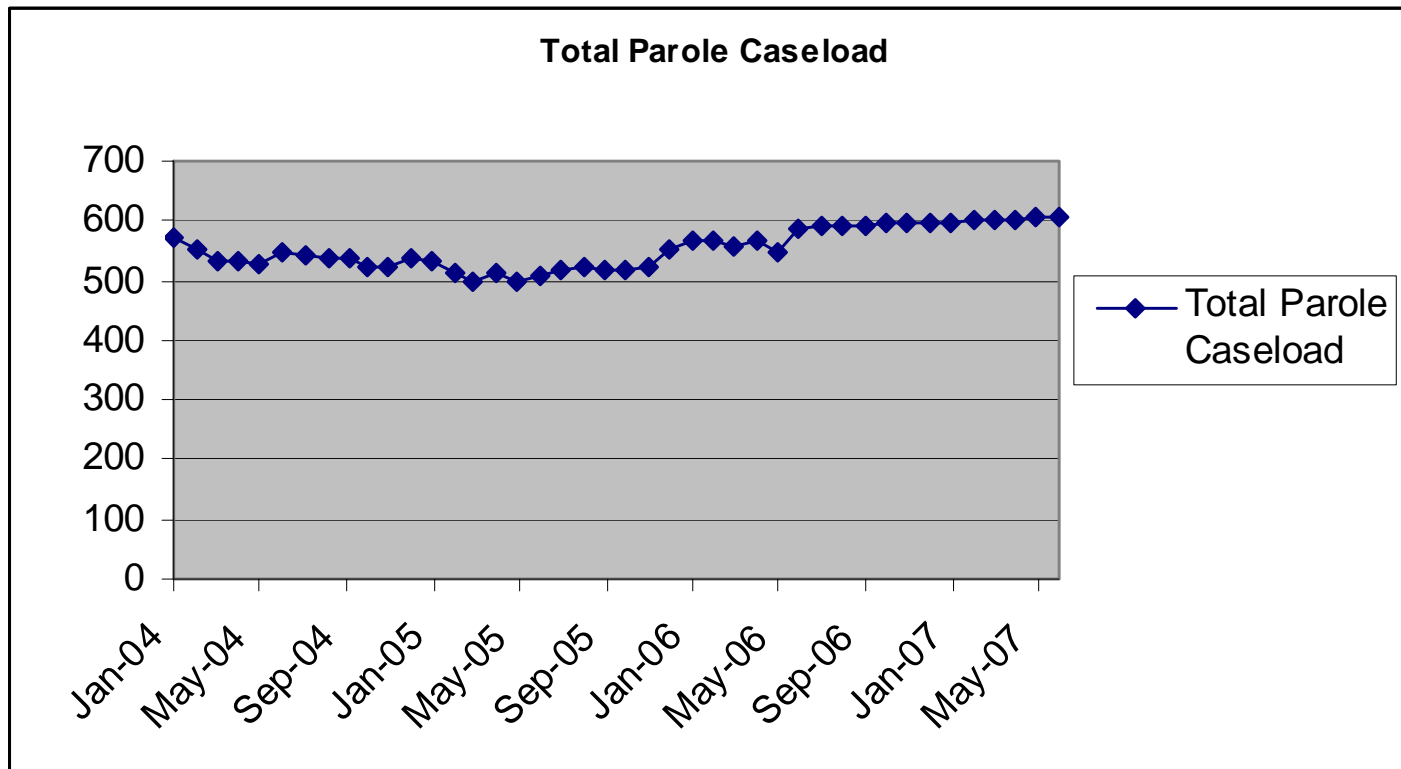
This graph represents total institution cases, non-gender specific, statewide. The state facilities that house juveniles in a correction facility are: Caliente Youth Center with both males and females, Nevada Youth Training Center (NYTC) which houses males only, Summit View Youth Correctional Center which houses males only.



Nevada's total institutional capacity for juveniles is 396.

Total Parole Cases

This graph represents total parole cases, non-gender specific statewide.

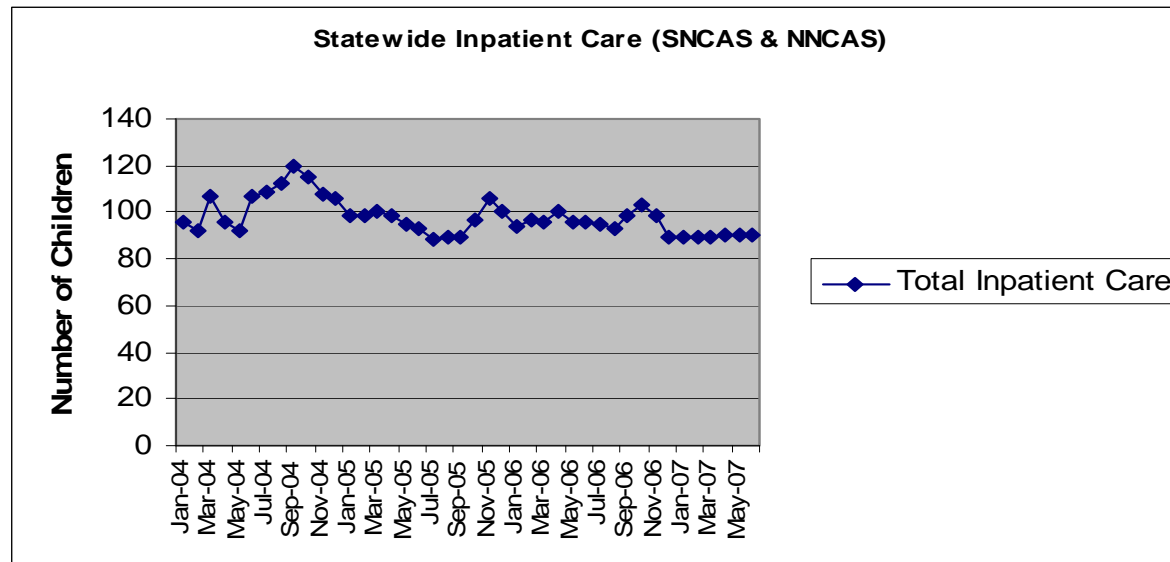


Children's Mental Health

Children's Mental Health Services are projected using the same methodology as child welfare and are based upon the current staffing level.

Inpatient Care

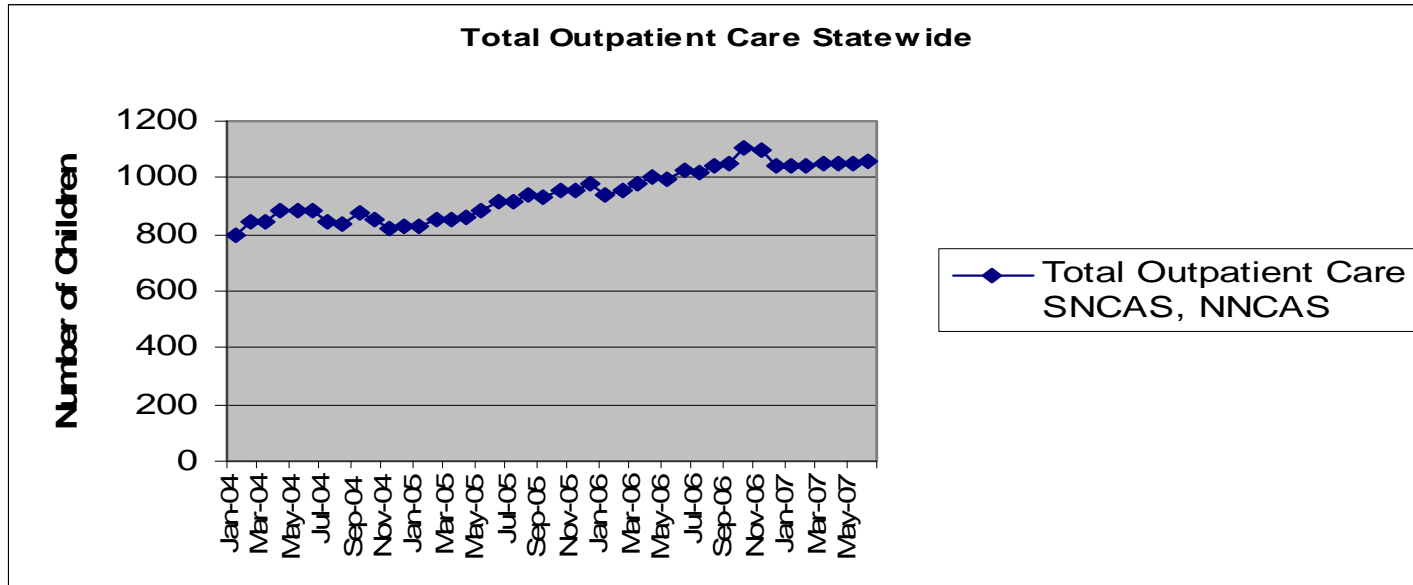
Inpatient Care for SNCAS includes Desert Willow and On Campus Treatment Homes. Inpatient Care for NNCAS includes the Adolescent Treatment Center and the NNCAS Learning Homes. The total capacity for Inpatient Care for SNCAS is 73 and the total Inpatient Care capacity for NNCAS is 40 for a total statewide capacity of 113.



The average number of Inpatient Care cases for the period January 2004- June 2007 is 98.

Outpatient Care (SNCAS, NNCAS)

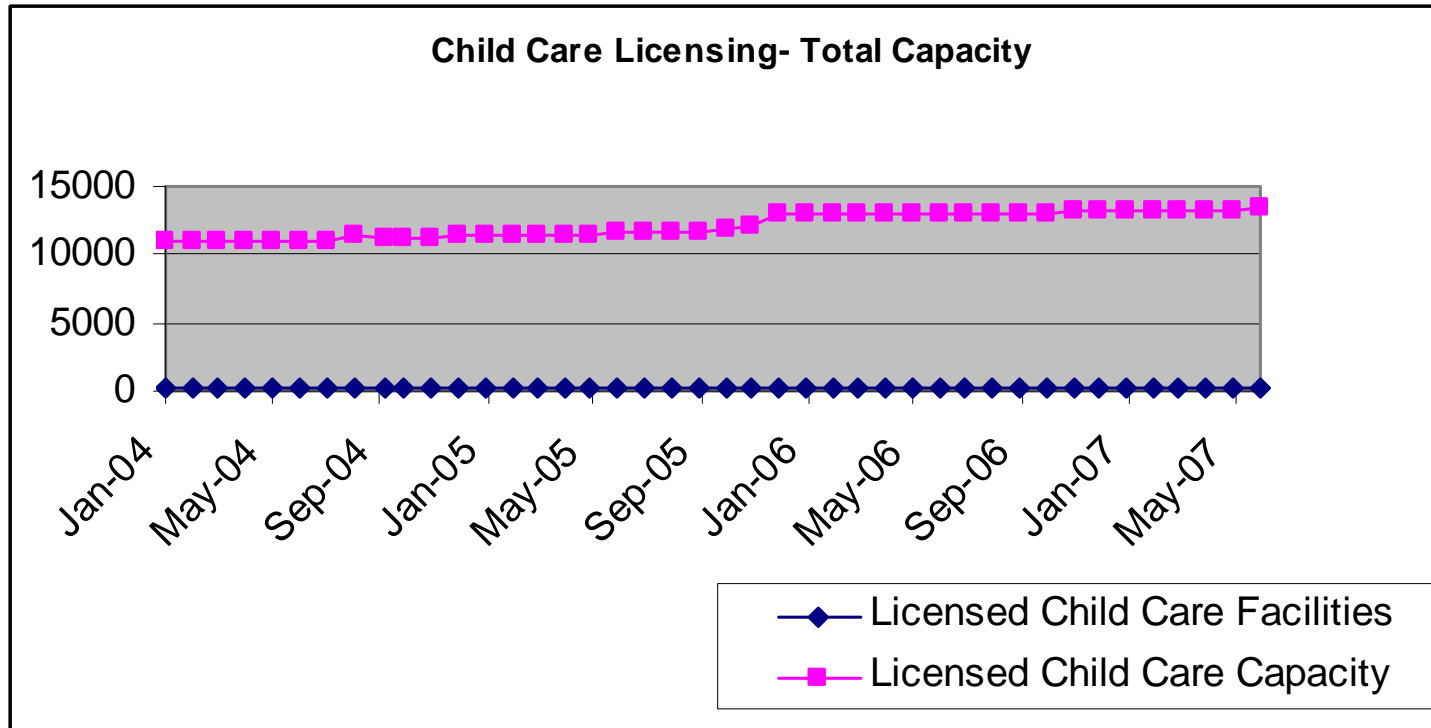
Outpatient Care for SNCAS includes Early Childhood Crisis, Early Intervention, Childhood Care Services and Day Treatment. For NNCAS Outpatient Care includes Early Childhood Treatment, Project Crisis and Outpatient Care caseloads.



The average number of Statewide Outpatient Care cases for the period January 2004- June 2007 is 943.

Child Care Licensing

Child Care Licensing is projected using the same methodology as Child Welfare.



The average number of Licensed Child Care Facilities in the time period of January 2004- June 2007 is 230, the average Licensed Child Care Capacity is 12,138.